



REGULAR SPRAY

Controls water flow strength and provides a large spray



SHOWER SPRAY + MASSAGE

Soothing spray combined with invigorating massage



SHOWER MASSAGE

Invigorating and helps sore muscles feel better



WATER DRIP

Helps to save water and is an added reminder to turn water off at the faucet when your shower is complete



SHOWER STOP

The stop function can help you save water when bathing

INCLUDES:

- Adjustable shower head
- Diverter valve
- 84" hose
- Wall mount (w/screws)

1/2"



84"



Nova Medical Products

1470 Beachey Place
Carson, CA 90746 USA

www.NovaMedicalProducts.com

Email:
info@NovaMedicalProducts.com

MADE IN CHINA

Client: Nova

Job: 9311-R Shower head

Trim: 4.5" x 7.25"

Bleed: .125"

Color:

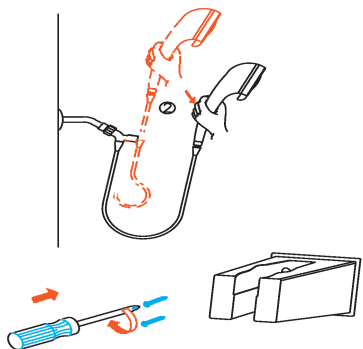
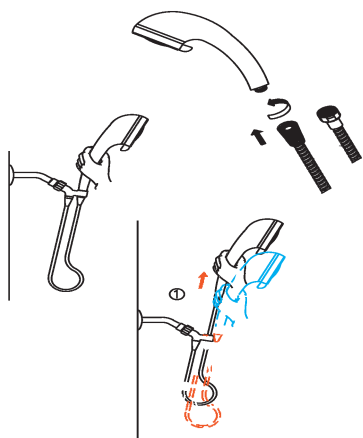
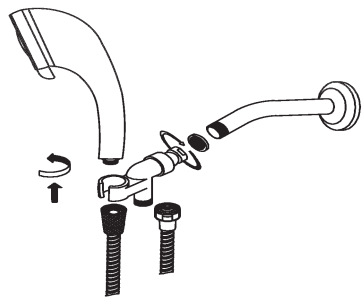
side A: 4-color process

Contact:

Tim Kimble

425 313 9076

tim@kimbledesign.com



ASSEMBLY INSTRUCTIONS:

1. Remove existing shower head from spout.
2. Screw diverter valve onto spout. (Include washer.) Be sure not to overtighten
3. Attach the hose to the bottom spout of the diverter valve.
4. Attach the Nova handheld shower to the other end of the hose as indicated in the picture (The shower head is equipped with a water saving washer so no extra washer is needed.)
5. Use the screws and mounting inserts to fasten the shower head holder bracket to the wall. (A drill may be needed for some shower wall surfaces.)



WARNING:

Always turn the water off after bathing at the tap to prevent accidental scalding.

Customer Help Line:
1-800-557-6682

Client: Nova

Job: 9311-R Shower head

Trim: 4.5" x 7.25"

Bleed: .125"

Color:

side B: 4-color process

Contact:

Tim Kimble

425 313 9076

tim@kimbledesign.com